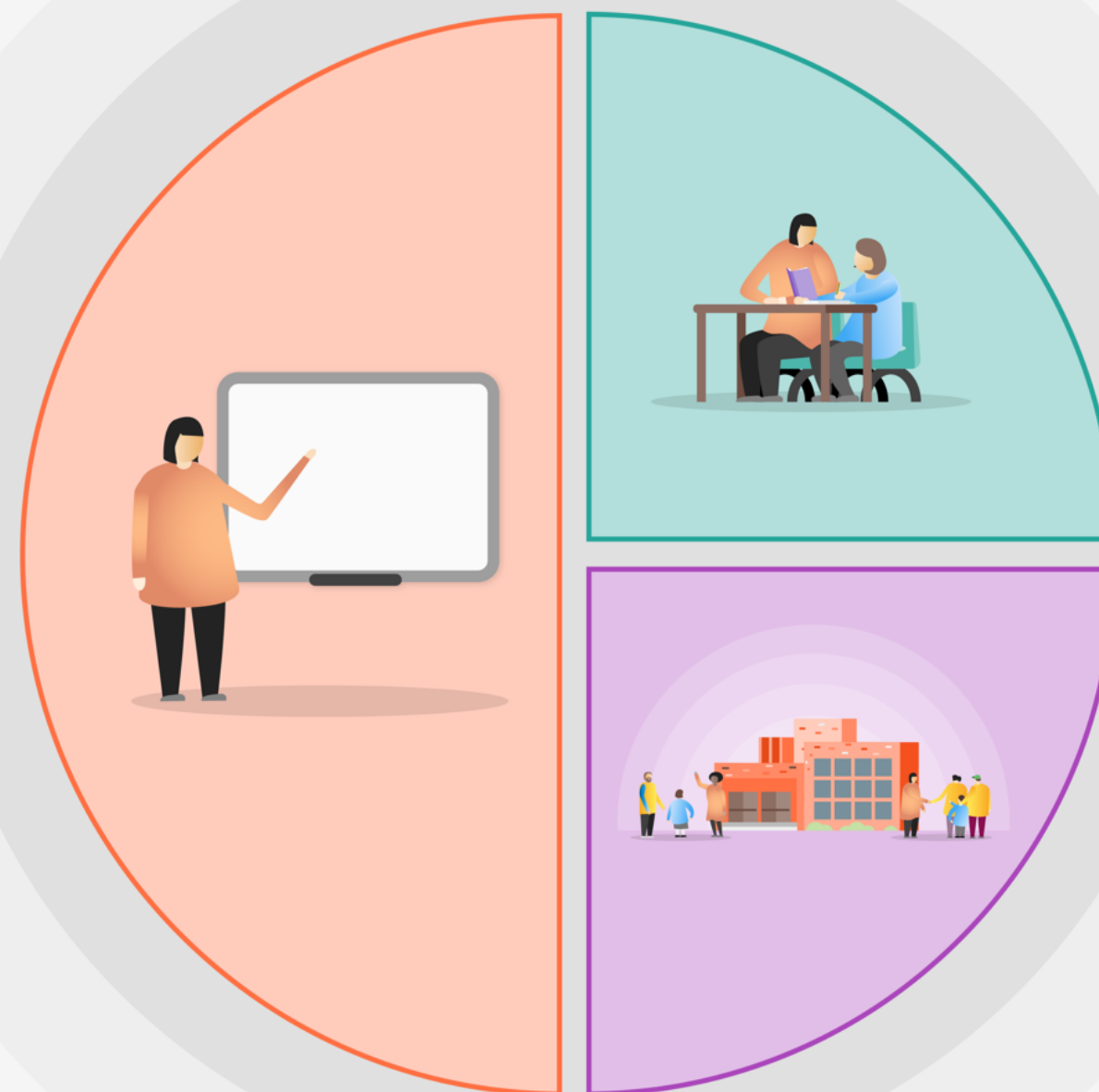




1 Teaching

- Maintained and regular home/school contact to support students and their families both when the school is open and in the event of a local lockdown.
- Assessment of current attainment across all subjects to identify accurately the support that is required and the starting point of teaching and learning.
- Focus on functional English across all subjects in particular writing and spelling, including refreshing and enhancing the use of technical language.
- Focus on functional mathematics across all subjects, identifying opportunities for application across the range of subjects.
- Focus on TALC scores and how to improve students' communication and access across all subjects by ensuring questioning is pitched appropriately to extend learning and understanding in subjects whilst extending language skills.
- Training for students and staff on Microsoft Teams use in class to support in case of the need to isolate or a local lockdown.
- Remote Learning planned into schemes of work with engaging learning opportunities planned.
- Storing of lessons and sequences of lessons as required to support them development of a remote learning platform.
- Production of homework to target consolidation of learnt concepts and to support Year 11 catch up across all subjects.
- HCC SALT Service to provide support in developing key vocabulary building across all subjects.
- Teacher's Meetings and whole staff meetings to identify areas that require focus and professional development as required.
- Thrive is utilised in class to gain emotional regulation to support readiness to learn – CPD offered and ongoing to support this.
- CPD on how to deliver high quality remote learning opportunities to ensure the threat of further local lockdowns/isolation does not hamper progress.
- Continued access to a range of experiences and opportunities across the curriculum, including remotely, in school and out of school.
- Opportunities for school staff to meet remotely to discuss what is working well and what needs to be improved further, identifying CPD needs.
- Access to HIAS to support the design and implementation of the curriculum as identified by the data and staff need.



2 Targeted academic support

- Reading, Spelling, maths ages assessed to inform intervention requirements.
- Speech and Language assessed through TALC to inform intervention requirements.
- Mental Health and wellbeing of students assessed through the Therapies Team and targeted, personalised interventions put into place including ELSA, Thrive, FIEPS, Play Therapy and Occupational Therapy to support student readiness to learn.
- After-school catch-up sessions for those students who require Literacy, Numeracy or SALT intervention beyond that delivered during the school day.
- Homework club for Year 11.
- Online literacy and numeracy provision to access for homework.
- Individual and targeted numeracy and literacy homework as required across the school.

3 Wider strategies

- Videos made demonstrating how to use Microsoft Teams.
- Virtual training session for maths for parents.
- Maths challenges for children to take part in at home
- Raffle ticket every time take part in a maths challenge online
- Video/ online parent/carer meeting to support further maths in the home.
- Liaison with families to ensure targeted and well-placed intervention by the school beyond academics.
- Family Support Work offered to those families in need.
- Food Parcels delivered
- Signposting for benefit entitlement.
- Joined working across Andover Special Schools and the LA to support a remote learning platform for children with SEN, their teachers and parents/carers.
- Joined working with RCS to support parents/carers accessing courses to support them getting back to work, supporting those who lack confidence to access them.
- Opportunities for community events virtually to sustain the school ethos and community.